

# TRACK & FIELD

**NEW**

**1550  
Adult  
Pegasus  
Singlet**  
PAGE 63

FEATURING  
**DRYWIN™**  
MOISTURE  
MANAGEMENT  
FABRIC

*Moisture management  
nylon that keeps you  
cooler and drier  
to help you  
run your best.*

**STAMPEDERS**



**PEGASUS COLLECTION**

**4550  
Adult  
Pegasus  
Short**  
PAGE 63

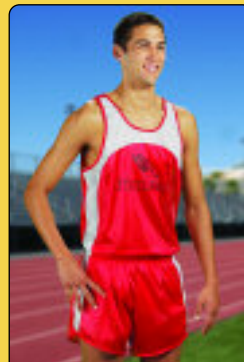


**1540  
Women's  
Pegasus  
Singlet &  
4540 Short**  
PAGE 63

## **OTHER COLLECTIONS**



**WINDRUNNER  
COLLECTION**  
PAGE 64



**FASTRACK  
COLLECTION**  
PAGE 65

## PEGASUS COLLECTION

**YOUTH AND ADULT SIZES!**



**NEW**

**1560** YOUTH LIST **9.70**

**1550** ADULT LIST **9.90**

**STYLE:** "Pegasus" Series Singlet

**FABRIC:** 40 denier "DryWin™" nylon tricot

**FEATURES:** • Moisture control fabric keeps you cooler and dryer while competing  
• Solid color design  
• Sewn with durable poly core thread

**SIZES:** Youth S-L  
Adult S-3XL Add (2X-\$5, 3X-\$10)

**BODY**

- 1 - Royal
- 2 - Scarlet
- 4 - Black
- 7 - Navy



1 2 4 7

## PEGASUS COLLECTION



DUAL FRONT PANELS

**NEW**

**1540** WOMEN'S LIST **9.90**

**STYLE:** Women's "Pegasus" Series Singlet

**FABRIC:** 40 denier "DryWin™" nylon tricot

**FEATURES:** • Special women's body cut  
• Moisture control fabric keeps you cooler and dryer while competing  
• Dual front panels that separate for easy lettering  
• Solid color design  
• Sewn with durable poly core thread

**SIZES:** XS-3XL Add (2X-\$5, 3X-\$10)

**BODY**

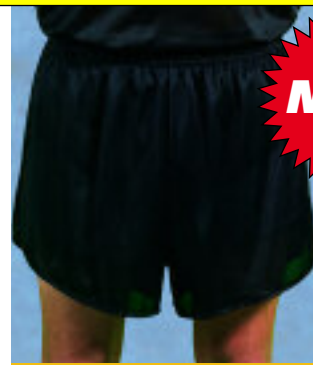
- 1 - Royal
- 2 - Scarlet
- 4 - Black
- 7 - Navy



1 2 4 7

## PEGASUS COLLECTION

**YOUTH, WOMEN'S & ADULT SIZES!**



**NEW**

**4560** YOUTH LIST **12.90**

**4550** ADULT LIST **13.90**

**4540** WOMEN'S LIST **13.90**

**STYLE:** "Pegasus" Series Track Short

**FABRIC:** 40 denier "DryWin™" nylon tricot

**FEATURES:** • Moisture control fabric keeps you cooler and dryer while competing  
• Self fabric liner for comfort  
• Solid color design  
• Sewn with durable poly core thread

**SIZES:** Youth S-L  
Women's S-2XL Add (2X-\$5)  
Adult S-2XL Add (2X-\$5)

**BODY**

- 1 - Royal
- 2 - Scarlet
- 4 - Black
- 7 - Navy



1 2 4 7

TRACK AND FIELD

**NEW**

**YOUTH AND ADULT SIZES!**



**2011** YOUTH LIST **38.90**

**2021** ADULT LIST **39.90**

**STYLE:** "Vision" Series Nylon Windshirt

**FABRIC:** Nylon taslan with white polyester taslan

**FEATURES:** • Custom knit collar  
• Coordinated body contrast  
• Dual pockets  
• Generous cut for comfortable fit

**SIZES:** Youth S/M-L/XL  
Adult S-3XL Add (2X-\$6, 3X-\$12)

### 2021 & 3021 COLORS

BODY COLOR	CONTRAST
1 - Royal	White
2 - Scarlet	White
4 - Black	White
7 - Navy	White



1 2 4 7

**NEW**



**3021** ADULT LIST **36.90**

**STYLE:** Adult "Vision" Series Nylon Windpant

**FABRIC:** Nylon taslan with white polyester taslan

**FEATURES:** • Non-elasticized zippered leg openings  
• Elastic waist with drawstring  
• Coordinated body contrast  
• Dual side pockets  
• Inseam 28" to 33-1/2"  
• Extended length leg bottom zippers  
• Generous cut for comfortable fit

**SIZES:** S-3XL Add (2X-\$5, 3X-\$10)

**1552**  
Adult  
Fastrack  
Collection  
Singlet  
PAGE 65



**4551**  
Adult  
Track Short  
PAGE 65

**NEW**

**2021**  
Vision  
Windshirt

**3021**  
Vision  
Windpant

# WINDRUNNER COLLECTION

TRACK AND FIELD

## WINDRUNNER COLLECTION



**NEW**



**1541** WOMEN'S LIST **12.90**

**STYLE:** Women's "Windrunner" Series Singlet

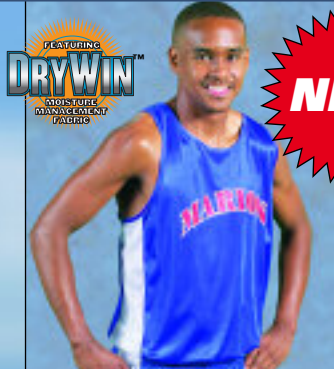
**FABRIC:** 40 denier "DryWin™" nylon tricot

- FEATURES:**
- Special women's body cut
  - Contrasting side panels
  - Moisture control fabric keeps you cooler and dryer while competing
  - Dual front panels that separate for easy lettering
  - Sewn with durable poly core thread

**SIZES:** S-3XL Add (2X-\$5, 3X-\$10)

**1541**  
Women's  
Windrunner  
Singlet

## WINDRUNNER COLLECTION



**NEW**



**1551** ADULT LIST **12.90**

**STYLE:** Adult "Windrunner" Series Singlet

**FABRIC:** 40 denier "DryWin™" nylon tricot

- FEATURES:**
- Contrasting side panels
  - Moisture control fabric keeps you cooler and dryer while competing
  - Sewn with durable poly core thread

**SIZES:** S-3XL Add (2X-\$5, 3X-\$10)

**4541**  
Women's  
Track Short  
PAGE 65

### 1541 & 1551 COLORS

BODY		SIDE PANEL	
15 - Royal	White	45 - Black	White
25 - Scarlet	White	75 - Navy	White



15

25

45

75

# FASTRACK COLLECTION

## FASTRACK COLLECTION

FEATURING  
**DRYWIN™**  
MOISTURE  
MANAGEMENT  
FABRIC

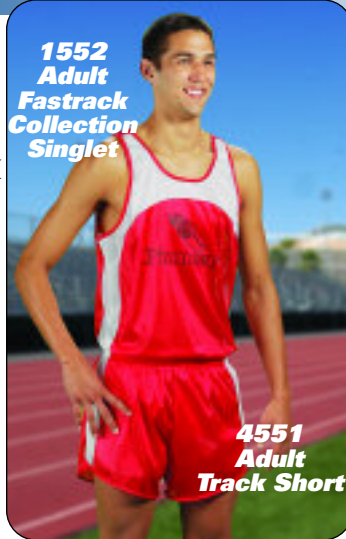


**NEW**

**1552 ADULT LIST 14.90**

- STYLE:** Adult "Fastrack" Series Singlet  
**FABRIC:** 40 denier "DryWin™" nylon tricot  
**FEATURES:** • Contrasting body panel with curved upper body insert  
 • Moisture control fabric keeps you cooler and dryer while competing  
 • Sewn with durable poly core thread  
**SIZES:** S-3XL Add (2X-\$5, 3X-\$10)

**1552 Adult Fastrack Collection Singlet**



**4551 Adult Track Short**

## FASTRACK COLLECTION

FEATURING  
**DRYWIN™**  
MOISTURE  
MANAGEMENT  
FABRIC



**NEW**

**1542 WOMEN'S LIST 14.90**

- STYLE:** Women's "Fastrack" Series Singlet  
**FABRIC:** 40 denier "DryWin™" nylon tricot  
**FEATURES:** • Special women's body cut  
 • Contrasting body panel with curved upper body insert  
 • Moisture control fabric keeps you cooler and dryer while competing  
 • Dual front panels that separate for easy lettering  
 • Sewn with durable poly core thread  
**SIZES:** S-3XL Add (2X-\$5, 3X-\$10)

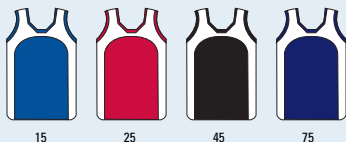
**1542 Women's Fastrack Collection Singlet**



**4541 Women's Track Short**

### 1542 & 1552 COLORS

BODY	SIDE PANEL		
15 - Royal	White	45 - Black	White
25 - Scarlet	White	75 - Navy	White



## COORDINATING SHORTS

FOR BOTH **WINDRUNNER** AND **FASTRACK JERSEYS**

FEATURING  
**DRYWIN™**  
MOISTURE  
MANAGEMENT  
FABRIC



**NEW**

**4541 WOMEN'S LIST 16.90**

- STYLE:** Women's Track Short  
**FABRIC:** 40 denier "DryWin™" nylon tricot  
**FEATURES:** • Special women's body cut  
 • Moisture control fabric keeps you cooler and dryer while competing  
 • Side panels in contrast colors  
 • Self fabric liner for comfort  
 • Solid color design  
 • Sewn with durable poly core thread  
**SIZES:** S-2XL Add (2X-\$5)



**NEW**

**4551 ADULT LIST 16.90**

- STYLE:** Adult Track Short  
**FABRIC:** 40 denier "DryWin™" nylon tricot  
**FEATURES:** • Moisture control fabric keeps you cooler and dryer while competing  
 • Side panels in contrast colors  
 • Self fabric liner for comfort  
 • Solid color design  
 • Sewn with durable poly core thread  
**SIZES:** S-2XL Add (2X-\$5)

### 4541 & 4551 COLORS

BODY	SIDE PANEL		
15 - Royal	White	45 - Black	White
25 - Scarlet	White	75 - Navy	White



TRACK AND FIELD

**ADULT SINGLET:** S (34-36), M (38-40), L (42-44), XL (46-48), 2XL (50-52), 3XL (54-56)

**WOMEN'S SINGLET:** S (34-36), M (36-38), L (38-40), XL (40-42), 2XL (42-44), 3XL (44-46)

**ADULT SHORT:** S (28-30), M (32-34), L (36-38), XL (40-42), 2XL (44-46) **WOMEN'S SHORT:** S (26-28), M (28-30), L (30-33), XL (33-36), 2XL (36-39)